



GT AMERICA POWERED BY AWS

Music City Grand Prix – Nashville TN

August 4, 2023



SRO Operations Staff

- Brian Hughes
VP of Operations
Ph: +1 317-435-1831 brian.hughes@sro-motorsports.com
- John Maesky
Race Director, GT America
- Morgan Healey
Race Director, Toyota GR Cup
- Preston Buckley
Race Control Radio Communications
- Joe Legan
Technical Manager
- Todd Ketcham
Chief Scrutineer
- Sean Rogers
Pit Lane Manager



SRO Stewards

- Randy Hembrey Chairman of the Stewards
- Steve Pence Event Steward
- **John Walsh** Event Steward

GT America Pit Lane Ingress

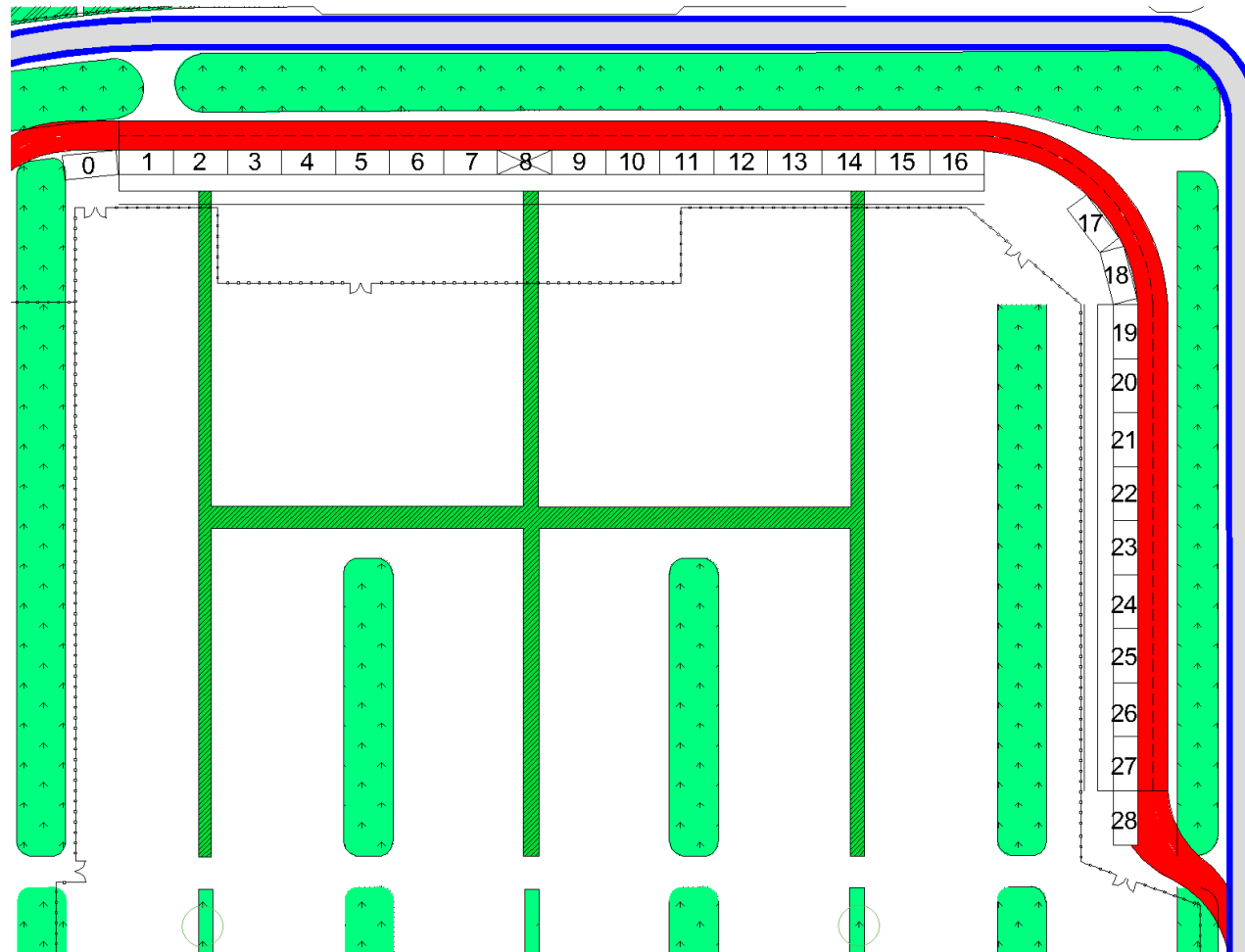
- Cars must enter the pit lane via the False Grid near pit in
- ALL team equipment will be on the “hot” side of the wall for all sessions, including the races
- ALL pit equipment will be towed in before the start of the session and towed out at the end of the session
- Team cars may share team pit boxes
- Race cars (GT America only) may enter pit lane after the session has started at the discretion of the pit lane official – pit equipment will not be allowed access to pit lane once a session has started
- Pit exit will close with 1 minute remaining in each session
- Cars wishing to stop in their pit box may not take the checkered flag on the track

GT America Pit Lane Ingress

Cars and Pit Equipment



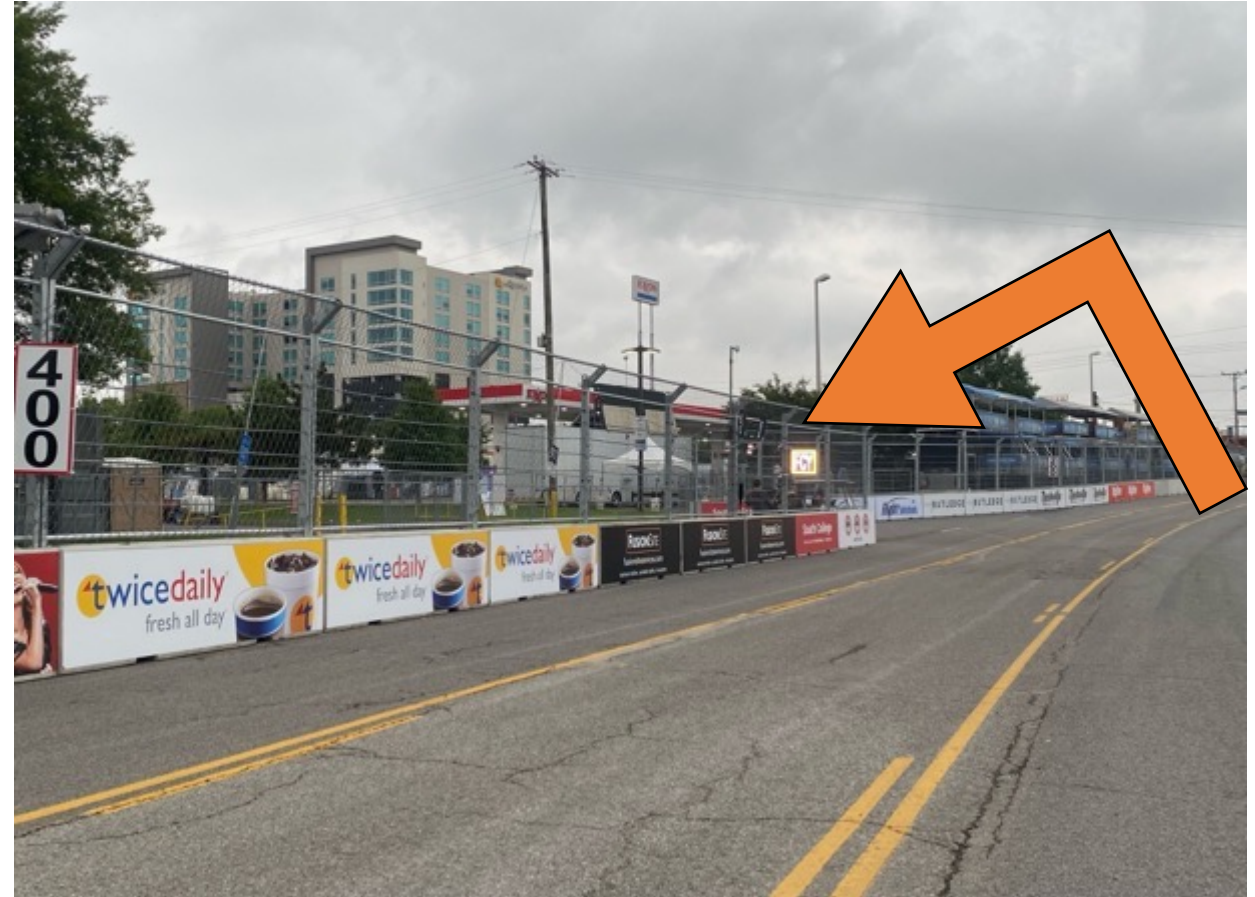
Pit Lane Layout



End of Session

Cars on Track

- Cars on track will take the checkered flag and continue with a cool down lap at a speed consistent with safety through Turn 7
- Cars must slow and be prepared to stop coming over the bridge between T8 – T9
- Cars will enter their respective paddocks prior to T9
 - GT America paddock is DL
 - Toyota GR Cup paddock is DR



**Failure to abide with any of the above directions
will be referred to the Stewards**

End of Session

Cars in Pit Lane

- Once the last car on track takes the checkered flag, all running cars will be released to the Turn 3 “backdoor”
- Marshalls will direct the cars onto the circuit at the Turn 3 “backdoor” as traffic permits
- Cars will enter their respective paddocks prior to T9
 - **GT America paddock is DL**
 - **Toyota GR Cup paddock is DR**

Failure to abide with any of the above directions will be referred to the Stewards

End of Session

Pit Equipment

- Pit equipment will follow the “pit lane” cars to the Turn 3 “backdoor”
- Marshalls will direct the Pit equipment onto the circuit as traffic permits
- Pit equipment will enter their respective paddocks prior to T9
 - **GT America paddock is DL**
 - **Toyota GR Cup paddock is DR**

Failure to abide with any of the above directions will be referred to the Stewards

Pit Lane Egress



- After each Official Session (P1, P2, Q, R1, R2), all cars are to report directly to Parc Fermé for Data Download. Bronze Practice remains optional.
- Officials will direct cars to download areas
- Selected cars will be sent to the Scrutineering area of the Parc Fermé.
- Drivers must turn off the engine, exit the car and exit Parc Fermé. One crew member must remain near the border of the Parc Fermé area.
- Once all cars are downloaded, the cars selected for further scrutineering will be directed as needed. All other cars will be released by an Official.

GT America PRE-GRID

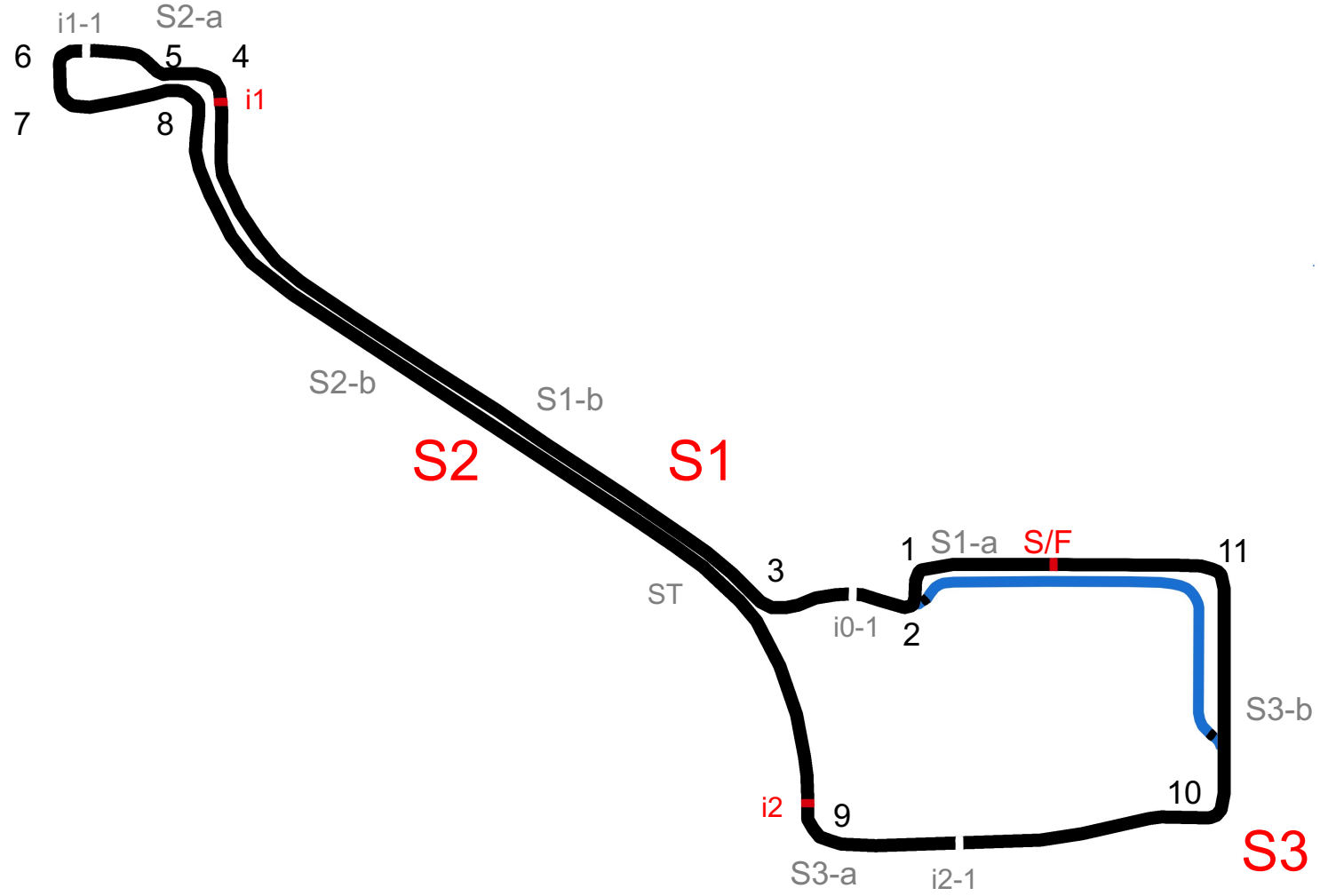
RACES ONLY

Cars will be gridded in the paddock for both races



- Flagging / ~~Light Panels~~
- Street course: Be prepared to **STOP** with waved yellow flags
- T1 runoff – Lap invalidated in Practice / Qualifying. No advantage gained in race
 - Utilize runoff areas as necessary, get sorted and re-enter appropriately
- If car is disabled, stay off-line & find reasonable overlap to park
- Do not exit the circuit direct to the paddock mid-session. Return to Pit Lane or find reasonable overlap
- No "Hardship Laps" at this event
- **Maximize green flag time– in Practice, Qualifying, & Race**

Circuit Map



- Pit Lane
 - All equipment / work on hot side of the pit wall
 - Maximize space by keeping all equipment far to the left
 - 50kph speed limit – may not be reasonable in certain circumstances
- Stoppages
 - Safety equipment may deploy on display of red flags
 - Expedite back to pit lane (to pit boxes, no queuing) – watch for local flags in incident areas
 - Recovered cars will be stashed in nearest safe location, possibly not returned to pit lane / paddock until after the session
 - Session restarts from pit boxes, no queueing at the pit exit

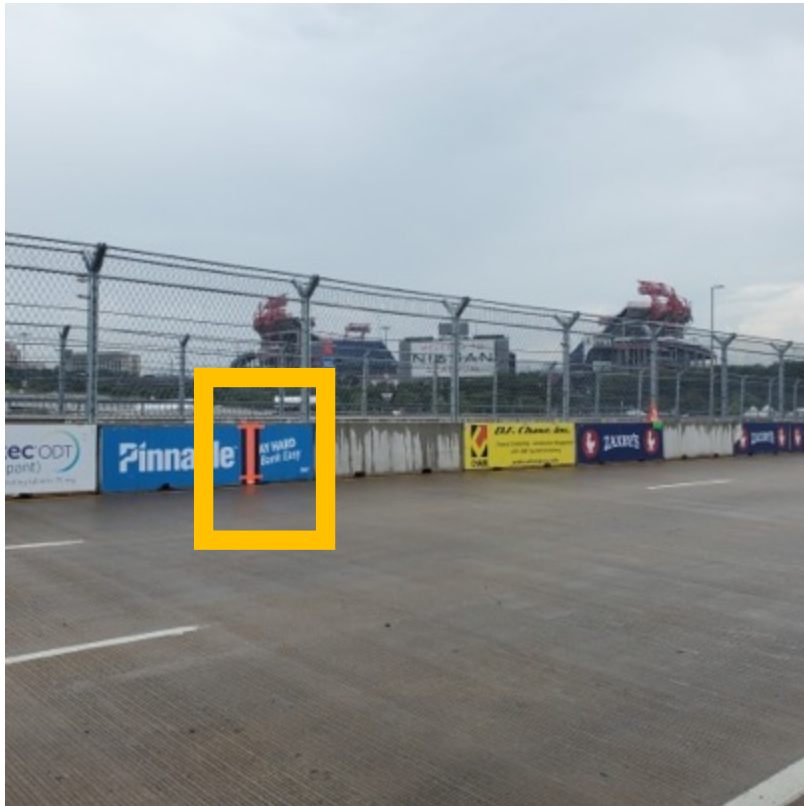
- Teams are permitted to work on their cars, including changing tires, until the announcement of “5 minutes to the command to start engines” from Race Control. This also includes the Pre-Grid area.
- Any work performed after the 5 minutes to the command announcement must be as permitted in the Regulations or with permission from and under the supervision of Series Officials
- Teams are permitted to check and/or adjust tire pressures until the announcement of “5 minutes to the command to start engines” from Race Control.
- Violators will be reported to the Stewards

Race Start



- (1.5) Formation laps
- Safety Car will exit at T3 on second time by
- Pole sitters to maintain SC speed from T3 to the start
- Pair up second time out of T8 (Pole is driver's left)
- Race start on bridge into T9
 - Start zone marked with black and orange stripes DRIVERS LEFT (See next slide)
 - No column passing until beyond the start line (start stand)
 - A separate green flag will be waved for each class

Race Start Zone



Full Course Yellow Procedures



- Flags, radio, in-car lights all signal FCY
- Leader slows to SC speeds, rest of the field to pack up (respecting the incident)
- Safety Car dispatches from **either T3 OR T8**
- RC will broadcast information about incidents / recoveries
 - Be prepared for full course blockage during recoveries

Full Course Yellow Procedures (Cont.)



- Lights out no later than T11
- SC to depart track at T3 driver's left
- Leader maintains SC speed until restart
- Restart acceleration out of T8
- Delayed green flag

Post Event

- Teams may begin pack-up Sunday morning
- The transporter exit route is expected to be open by approximately 8:00PM
 - No transporters will be permitted to depart prior to the exit route being opened
- ALL transporters must vacate the paddock by 9:00PM Sunday
- Teams are responsible for their paddock areas
 - Do not leave tires or used parts behind
 - HazMat must be properly disposed of in the designated areas

Post-Race

- Be prepared to coach top 3 drivers in each class to podium
 - (Photo to be distributed)
- All cars to data download

Transporter Exit Route





- Nitrogen bottles must always be secured with straps
 - Violators will be reported to the stewards and are subject to penalty / fine
- Please review SR 3.11
- Series / Team flags must be on display in the paddock

Upcoming Event Notes

- Road America
 - Event Schedule available on Team Website
 - Paddock Load in will start at 10:00AM Wednesday August 16
- Sebring
 - Event Schedule available on Team Website
- Indianapolis 8 Hour
 - Event Schedule available on Team Website

Thank you and have a good, safe weekend!

